

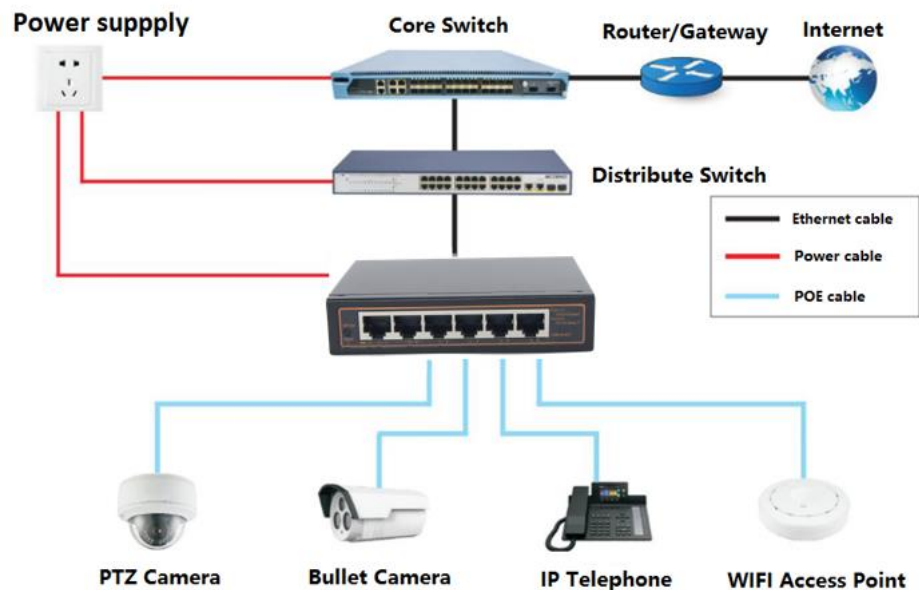
Unmanaged Ethernet POE Switch (ITT-4PFE2FE-C-DC)

P/N : [ITT-SW4071](#)



ITT-4PFE2FE-C-DC is a small fast Ethernet POE switch, providing 6 electrical fast Ethernet ports. All the 6 ports support speed and duplex auto-negotiation and auto MDI-MDIX function, plug and play. Port 1~4 support IEEE802.3af/at standard PoE power supply over Ethernet cable and provide 15W or 30W power per port. ITT-4PFE2FE-C-DC provides a switch button to extend the Ethernet transmission distance of 4 POE Ethernet ports up to 200m. All of these features make the product ideal for many applications such as video surveillance, WIFI coverage, intelligent building, and factory automation, etc.

- Support Auto MDI-MDIX function
- Wire speed performance
- Support IEEE802.3x pause frame-based and backpressure flow control
- Switch button for extending the Ethernet transmission distance up to 200m
- Support IEEE802.3 af/IEEE802.3 at standard 15/30W PoE
- Support 30W/port, total 120W POE power output
- 42 ~ 56V DC power supply



SERVICES:
Guaranteed Warranty



Specifications:

Standard	<ul style="list-style-type: none"> ➤ IEEE 802.3 10Base-T ➤ IEEE 802.3u 100Base-Tx ➤ IEEE 802.3x flow control ➤ IEEE 802.3.af : 15.4W PoE ➤ IEEE 802.3.at: 30W PoE
Switch Properties	<ul style="list-style-type: none"> ➤ MAC Table: 1K ➤ Packet Buffer: 448K ➤ Packet Forwarding Rate: 0.744Mpps
Interface	<ul style="list-style-type: none"> ➤ Electrical Ports: 6 10/100/1000Base-T (RJ45)
LED Indicator	<ul style="list-style-type: none"> ➤ Power LED: PWR ➤ Interface LED: RJ45(Link&ACT)
Power	<ul style="list-style-type: none"> ➤ Power Terminal: 5.5-2.5 DC socket ➤ Power Input: 44~56V DC ➤ Full load power consumption: < 2W (POE:<120W)
Physical Characteristics	<ul style="list-style-type: none"> ➤ Housing: Metal, fanless ➤ Dimensions : 121mm x 89mm x 26mm(WxD×H) ➤ Weight: 0.28kg ➤ Mounting: desktop
Environmental Limits	<ul style="list-style-type: none"> ➤ Operating Temperature: -15 to 65°C ➤ Storage Temperature: -40 to 70°C ➤ Ambient Relative Humidity: 5 to 95% (non-condensing)

Ordering Information

Product model	<ul style="list-style-type: none"> ➤ ITT-4PFE2FE-C-DC
Product descriptions	<ul style="list-style-type: none"> ➤ 4*10/100Base-TX (IEEE802.3af/at POE)+2*10/100Base-TX, ➤ Unmanaged Ethernet POE Switch, ➤ standalone unit for desktop installation, ➤ 42-56VDC power supply

SERVICES:
Guaranteed Warranty

