

Managed Layer-2 Industrial PoE Ethernet Switch 16 ETH (10/100/1000) + 4 SFP (1.25G)

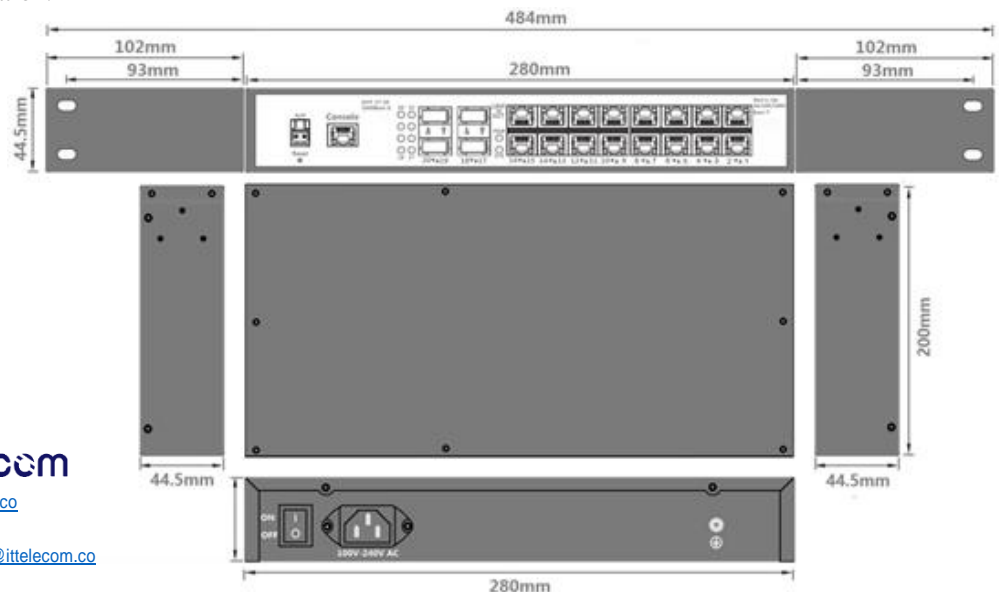
P/N : [ITT-SW3968](#)



The ITT-16GE4GF-I-AC is a managed L2 industrial Ethernet switch providing 16 electrical and 4 optical gigabit Ethernet ports. It supports abundant L2 features such as VLAN, STP/RSTP/MSTP, ERPS, QoS, ACL, and supports Web/CLI management and third-party SNMP management. All models are with IP40 protection class and meet EMC industrial level 4 requirements. It provides wide AC voltage range of 100-240V, wide operating temperature range of -40 to the +85°C. Each product has passed a 100% burn-in test in 85°C to ensure its quality high-reliability transmission.

- -40 to 85°C operating temperature range
- IP40 metal housing with fanless design
- Level 4 EMC Protection
- One key ring configuration
- ERPS with protection switching time < 20ms
- WEB, Telnet, CONSOLE, EMS management

All of these features make the product ideal for applications that require high-reliability transmission, such as video surveillance, tolling systems, ITS, and factory automation.



SERVICES:
Guaranteed Warranty



Website: ittelecom.co
 Skype: [ittelecomco](https://www.skype.com/en/contacts/business/ittelecomco)
 Email: mailto:sale@ittelecom.co

Managed Layer-2 Industrial PoE Ethernet Switch



Network Standards	IEEE 802.3 10Base-T IEEE 802.3u 100Base-Tx IEEE 802.3ab 1000Base-T IEEE 802.3z 1000Base-X
Certifications	CCC, CE, FCC, RoHS
Switch Technical	<p>MAC Table: 8K Packet buffer: 4M VLAN: 4K VLAN Mode: Access/Trunk/Hybrid</p> <ul style="list-style-type: none"> ➤ 802.1Q/port/protocol/MAC/IP subnet based VLAN; ➤ QinQ and VLAN translation; ➤ IGMP snooping v1/v2/v3, IGMP proxy, MVR; ➤ DHCP client/sever/relay ➤ LACP for port bandwidth extension, load balance; ➤ STP/RSTP/MSTP for ring protection; ➤ ERPS with protection switching time <20ms; ➤ one key ring configuration for STP/RSTP/ERPS; ➤ Loopback detection and loopback test; ➤ 8-queue QoS with SP/WRR scheduling policy; ➤ Rate limitation and traffic shapping; ➤ DLF/multicast/broadcast limitation; ➤ MAC/VLAN/IP/TCP/UDP port/ToS based ACL ➤ Dynamic MAC learning and static MAC configuration; ➤ MAC addresss learning enable/disable per port; ➤ MAC limitation per port; ➤ Fiber RDI Remote Defect Indication) alarm; ➤ Dying Gasp remote equipment fail alarm; ➤ 801.2x, RADIUS, TACACS+ ➤ HTTPS, SSH; ➤ Port mirror; ➤ RMON group 1, 2, 3, 9; ➤ SNMP v1/v2c/v3; ➤ Online upgrade and dual-Image firmware; ➤ Configuration backup and restore; ➤ CONSOLE and telnet for CLI management; ➤ WEB management;
Interface	<ul style="list-style-type: none"> ➤ Console Ports: 1 RS-232 (RJ45) ➤ Optical Ports: 4 1000Base-X (SFP) ➤ Electrical Ports: 16 10/100/1000Base-T (RJ45)

SERVICES:
Guaranteed Warranty



Website: ittelecom.co
Skype: [ittelecomco](https://www.skype.com/en/contacts/ittelecomco)
Email: mailto:sale@ittelecom.co

LED indicator	<ul style="list-style-type: none"> ➤ Power LED: PWR ➤ Interface LED: RJ45(Link&ACT) , Fiber(Link&ACT)
MTBF	360,000 hrs
Machinery Standard	<ul style="list-style-type: none"> ➤ IEC60068-2-6 (Vibration) ➤ IEC60068-2-27 (Shock) ➤ IEC60068-2-32 (Free Fall)
Power	<ul style="list-style-type: none"> ➤ Power Terminal: 10 A plug ➤ Full load power consumption: < 20W ➤ Overload Protection: Support ➤ Redundancy Protection: Support
Physical	<ul style="list-style-type: none"> ➤ Housing: Metal, fanless ➤ Protection Class: IP40 ➤ Dimensions : 44.5mm x 280mm x 200mm(W×H×D) ➤ Weight: 2.5kg ➤ Mounting: Rack mounting
Environment	<ul style="list-style-type: none"> ➤ Operating Temperature: -40 to 85°C ➤ Storage Temperature: -45 to 85°C ➤ Ambient Relative Humidity: 5 to 95% (non-condensing)
Industrial Standard	<ul style="list-style-type: none"> ➤ EMI: ➤ FCC CFR47 Part 15, EN55022/CISPR22, Class A ➤ EMS: ➤ IEC61000-4-2 (ESD): ±8kV (contact), ±15kV (air) ➤ IEC61000-4-3 (RS): 10V/m (80MHz-2GHz) ➤ IEC61000-4-4 (EFT): Power Port: ±4kV; Data Port: ±2kV ➤ IEC61000-4-5 (Surge): Power Port: ±2kV/DM, ±4kV/CM; Data Port: ±2kV ➤ IEC61000-4-6 (CS): 3V (10kHz-150kHz); 10V (150kHz-80MHz) ➤ IEC61000-4-16 (Common mode conduction): 30V (cont.), 300V (1s)

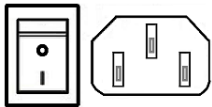
SERVICES:
Guaranteed Warranty



Managed Layer-2 Industrial PoE Ethernet Switch

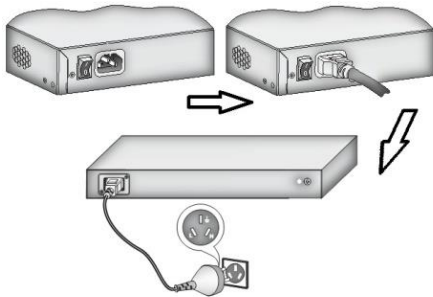
Product model	ITT-8GE2GF-I-TY-DC
Product descriptions	16*10/100/1000Base-T(RJ45) + 4*1000Base-X(SFP) , managed layer-2 industrial Ethernet switch , 100-240VAC

Power Input



- AC-DC power module
- Input Range: 100-240VAC

AC Power Line

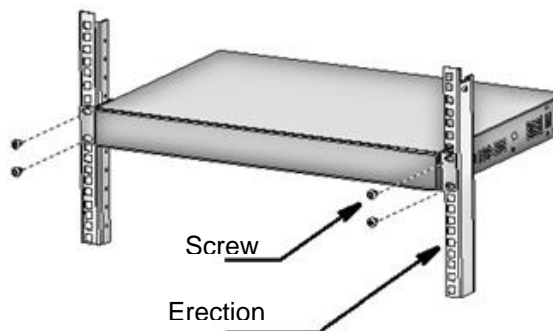


Earth Protection



Earth wire Protection

Rack Mounting



SERVICES:
Guaranteed Warranty

