



4-Port 10/100/1000Mbps
Industrial PoE Switch
With 2 Gigabit RJ45 and SFP



ITT-ISWP-4G-2S



Key Features:

- Ports:** Provide 4*10/100/1000Mbps PoE ports with 2* 1000Mbps SFP
- PoE Standard:** IEEE802.3af/at Power over Ethernet (PoE) Compliant
- Self-adaption:** RJ45 port supports 10/100/1000Mbps Auto MDI/MDIX
- Industrial Installation:** Din Rail mounting installation
- Wide Application:** Designed for Railway, traffic etc some Industrial environment
- Surge protection:** Protect the device from lighting surges and others electrical hazards
- Working Temperature:** -40 to 85 degrees operating temperature
- Considerate Design:** IP40 Industrial enclosure

Environmentally Hardened Design

With the IP40 metal industrial case which provides a high level of immunity against electromagnetic interference and heavy electrical surges, Being able to operate under the temperature range from -40 to 85 degrees C, the ITT-ISWP-4G-2S can be placed in any difficult environment.

Working Temperature
40°C 85°C
Wide temperature design
work well in different harsh environment

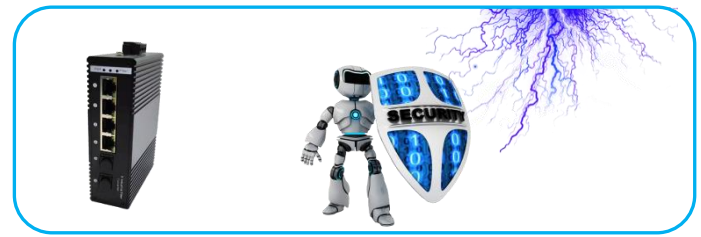


Dual Power input for High Availability Network

Featuring a strong dual power input system with wide-ranging voltages (12V~54V DC) incorporated into customer's automation network to enhance system reliability and uptime which make the installation more flexible and convenient.

Surge Protection Design

provides contact discharge of ±8KV DC and air discharge of ±15KV DC for Ethernet ESD protection. It also supports ±6KV surge immunity to improve product stability and protects users' networks from devastating ESD attacks, making sure the flow of operation does not fluctuate.



ITT-ISWP-4G-2S

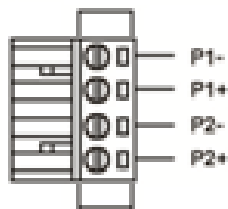
4-Port 10/100/1000Mbps Industrial PoE Switch with 2 Gigabit Uplink

Technical Datasheet

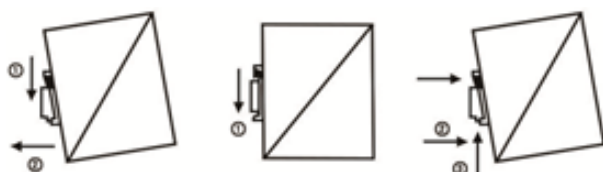
Model	ITT-ISWP-4G-2S	
Hardware Specifications		
ports	4* 10/100/1000BASE-T RJ45 auto-MDI/MDI-X ports 2* 1000Mbps SFP Slot	
Connector	Removable 4-pin terminal block Pin 1/2 for Power 1; Pin 3/4 for Power 2	
LED Display	Power Indicator: PWR(green).Network Indicator: Link(yellow) SFP: Green	
Power requirements	36~56V DC	
Power Consumption	Less than 3 Watts	
Switch Performance	Backplane bandwidth	20Gbps
	Packet forwarding rate	8.93Mpps
	MAC address	8k
	Flow control	Back pressure for half duple. IEEE 802.3x pause frame for full duplex
Enclosure	IP40 Metal case	
ESD Protection	6KV ESD	
Dimension(W x D x H)	30 x 90 x 130mm (1.18in x 3.54in x 5.12in)	
Weight	0.85Kg	
Power over Ethernet (PoE) Specifications		
Network standard	IEEE802.3i 10 BASE-T	
	IEEE802.3u 100 BASE-TX	
	IEEE802.3ab 1000BASE-T	
	IEEE802.3x Flow Control	
	IEEE802.3af Power over Ethernet	
	IEEE802.3at Power over Ethernet	
PoE Standard	IEEE802.3az EEE	
	IEEE 802.3af Power over Ethernet/PSE IEEE 802.3at Power over Ethernet Plus/PSE	
PoE Supply Type	1/2(+), 3/6(-) End-span	
PoE Power Output	Per Port 52V DC, 300mA. max. 15.4 watts (IEEE 802.3af)	
	Per Port 52V DC, 600mA. max. 30 watts (IEEE 802.3at)	
PoE Power budget	75W Optional	
Environment		
Environment specification	Operating temperature: -40°C~85°C, operating humidity: 5%~95%	
	Storage temperature: -40°C~85°C, storage humidity: 5%~95%	
Warranty	5 Years	

Installation Models

Power Terminal

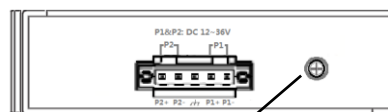


- ◆ 4-pin 3.81mm-spacing plug-in terminal
- ◆ 12V-54VDC wide voltage input
- ◆ P1&P2 dual power input
- ◆ Reverse protection



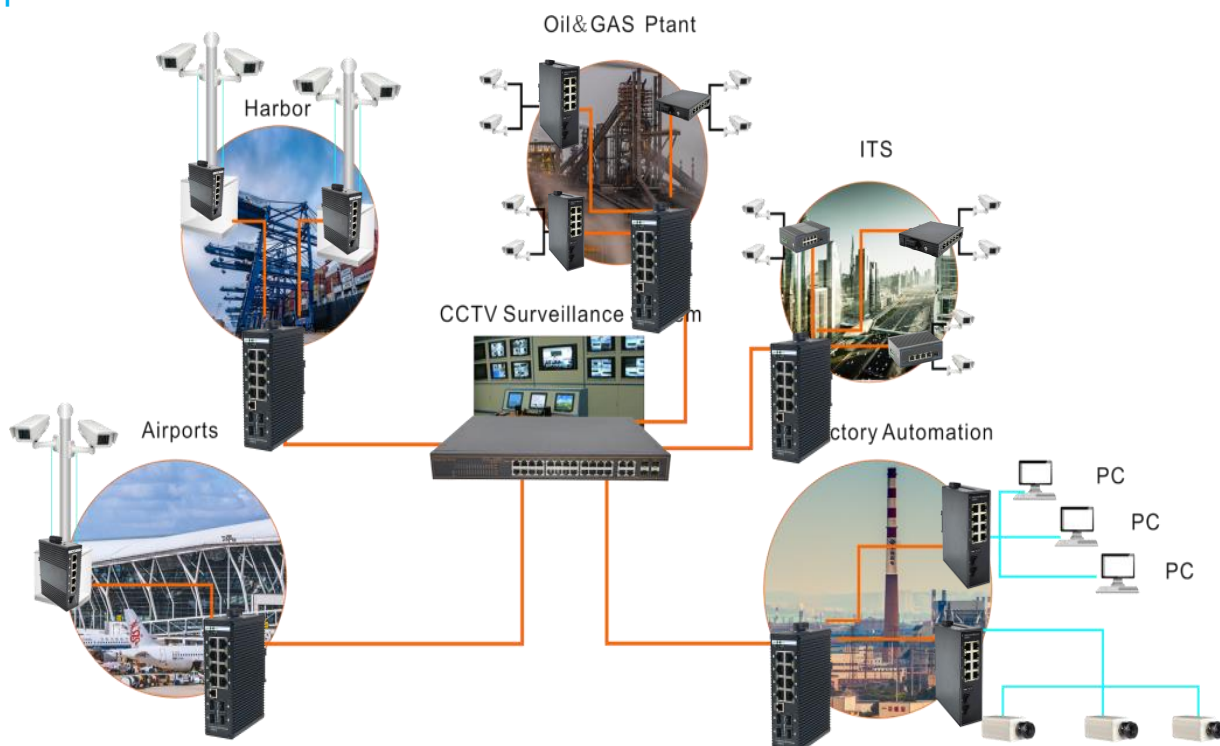
Din-Rail

Earth Protection



Ground terminal or screw

Applications



Ordering Information

ITT-
ISWP-4G-2S

4-Port 10 /100/1000Mbps Industrial PoE Switch With 2 Gigabit RJ45 and SFP uplink,Din rail supported.Adaptor excluded