



## Features:

- **Ports:** Provide 24\*Gigabit SFP with 8\*10/100/1000Mbps Ethernet ports and 4\*10G SFP+ Uplink
- **Self-adaption:** RJ45 port supports 10/100/1000Mbps Auto MDI/MDIX
- **Fiber Port:** 24\* 1000Mbps SFP and 4\*10G SFP+
- **Software:** VLAN, Spanning Tree, Link Aggregation, Port Mirroring, Ring Protection, IP Routing(Static Routing, OSPF, RIP), Multicast, Storm Suppression, DHCP, QOS
- **Managed:** Support remote web managed,VLAN and storm control and IPV6 management etc.
- **Surge protection:** Protect the device from lighting surges and others electrical hazards
- **Working Temperature:** -40 to 75 degrees operating temperatureConsiderate

## IES7521 Series Layer 3 Managed Switch

**ITT-COR-L3-24SFP8GE** industrial switches are L3 10G Switches based on new generation of high-performance hardware. It provides a large capacity, high-density GE interfaces,and 10G Fiber uplink interfaces. With extensive service features and IPv6 forwarding capabilities, supports Static Routing, RIP and OSPF ,this switch is applicable to various scenarios. For example, it can be used as an access or aggregation switch on campus networks or an access switch in data centers. The industrial switch integrates many advanced technologies in terms of reliability, security, and energy saving. It employs simple and convenient means of installation and maintenance to reduce customers' OAM cost and help enterprise customers build a next-generation IT network.

## Comprehensive QoS policies and security mechanisms

It supports strict ARP learning, which prevents ARP spoofing attacks that exhaust ARP entries, It also provides IP source guard to prevent DoS attacks caused by MAC address spoofing, IP address spoofing, and MAC/IP spoofing.

It supports DHCP snooping, which generates user binding entries based on users' access interfaces, MAC addresses, IP addresses, IP address leases, and VLAN IDs. DHCP snooping discards invalid packets that do not match any binding entries, such as ARP spoofing packets and IP spoofing packets.This prevents hackers from using ARP packets to initiate man-in-the-middle attacks on campus networks.The interface connected to a DHCP server can be configured as a trusted interface to protect the system against bogus DHCP server attacks.

## Easy deployment and maintenance free

Supports SNMP v1/v2/v3 and provides flexible methods for managing devices. Users can manage the switch using the CLI and Web NMS. Supports SSH2.0 and other encryption, which makes management much more secured and Supports LLDP protocol for simpler management.

## Technical Datasheet

<b>Model</b>	<b>ITT-COR-L3-24SFP8GE</b>	
<b>Hardware Specifications</b>		
Connector	16* 1000 Base-X SFP Slots 8*Gigabit SFP Combo 8* 10/100/1000BASE-T RJ45 auto MDI/MDIX ports	
Uplink port	4* 10G Base-X SFP+ Slots	
Console	1 x RS232-to-RJ45 serial port (115200, 8, N, 1)	
LED Display	Power Indicator: PWR(green). Network Indicator: Link(green) SFP: Green	
Network Standard	IEEE802.3i 10 BASE-T IEEE802.3u 100 BASE-TX IEEE802.3ab/z 1000 BASE-TX IEEE802.3x Flow Control IEEE802.3az EEE	
Switch Architecture	Store and Forward	
Transmission model	IEEE802.3X full-duplex and Backpressure half-duplex	
Switch Performance	Backplane bandwidth	256Gbps
	Packet forwarding rate	132.16Mpps
	MAC address	16k
Power requirement	AC100-240V 50/60Hz	
ESD Protection	6KV ESD	
Dimension(W x D x H)	440 x 290 x 44.5mm(17.32in x 11.42in x 1.75in)	
Weight	4kg	
Environment	Operating temperature: -40°C~75°C, operating humidity: 5%~95% Storage temperature: -50°C~80°C, storage humidity: 5%~95%	
Safety	FCC Part15 Class A,CE,RoHs	

## Functions

Port Mirroring	TX / RX / both Many-to-1 monitor
Vlan	802.1Q tagged-based VLAN
	Up to 256 VLAN groups, out of 4094 VLAN IDs
	802.1ad Q-in-Q tunneling Voice VLAN;Protocol VLAN;Private VLAN (Protected port),GVRP
Link Aggregation	IEEE 802.3ad LACP and static trunk
	Supports 8 groups of 8-port trunk
Spanning Tree Protocol	STP, IEEE 802.1D Spanning Tree Protocol
	RSTP, IEEE 802.1w Rapid Spanning Tree Protocol
	MSTP, IEEE 802.1s Multiple Spanning Tree Protocol
IGMP Snooping	IGMP (v2/v3) snooping
	IGMP querier
	Up to 256 multicast groups
MLD Snooping	MLD (v1/v2) snooping, up to 256 multicast groups
Access Control List	IPv4/IPv6 IP-based ACL / MAC-based ACL
Reliability	ERPS(G.8032)
IP Routing	Static Routing, OSPF, RIP
	8 mapping ID to 8 level priority queues
QoS	--- Port number
	--- 802.1p priority
	--- 802.1Q VLAN tag
	--- DSCP field in IP packet
	Traffic classification based, strict priority and WRR
Security	IEEE 802.1X port-based authentication
	Built-in RADIUS client to co-operate with RADIUS server
	RADIUS / TACACS+ user access authentication
	IP-MAC port binding
	MAC filtering
	Static MAC address
	DHCP Snooping and DHCP Option82
	STP BPDU guard, BPDU filtering and BPDU forwarding
	DoS attack prevention
	ARP inspection

IP source guard

## Management Function

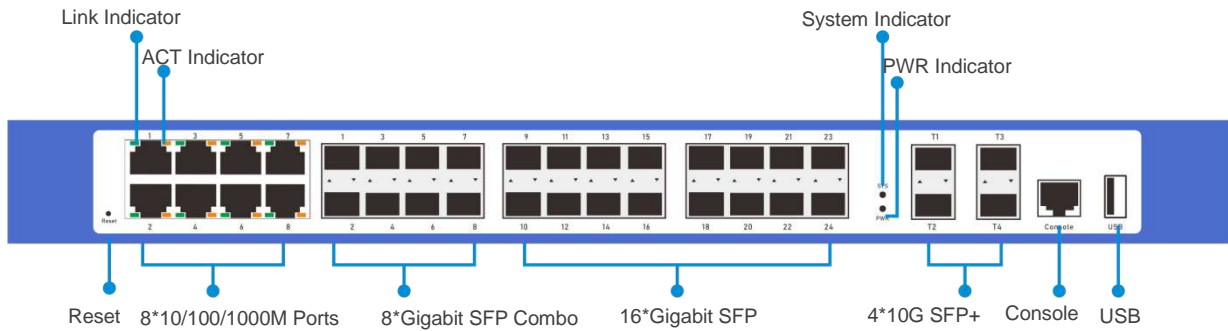
Basic Management Interfaces: Web browser / Telnet / SNMP v1, v2c, V3  
 Firmware upgrade by HTTP / TFTP protocol through Ethernet network  
 Remote / Local Syslog, System log, LLDP protocol, SNTP

## Secure Management Interfaces

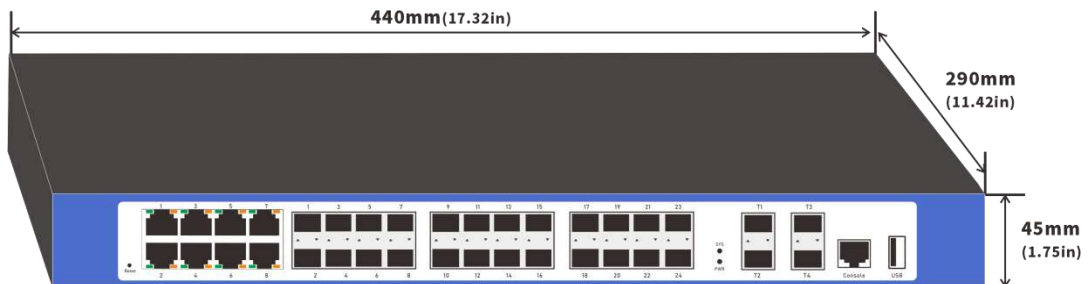
SSH, SSL, SNMP

## SNMP MIBs

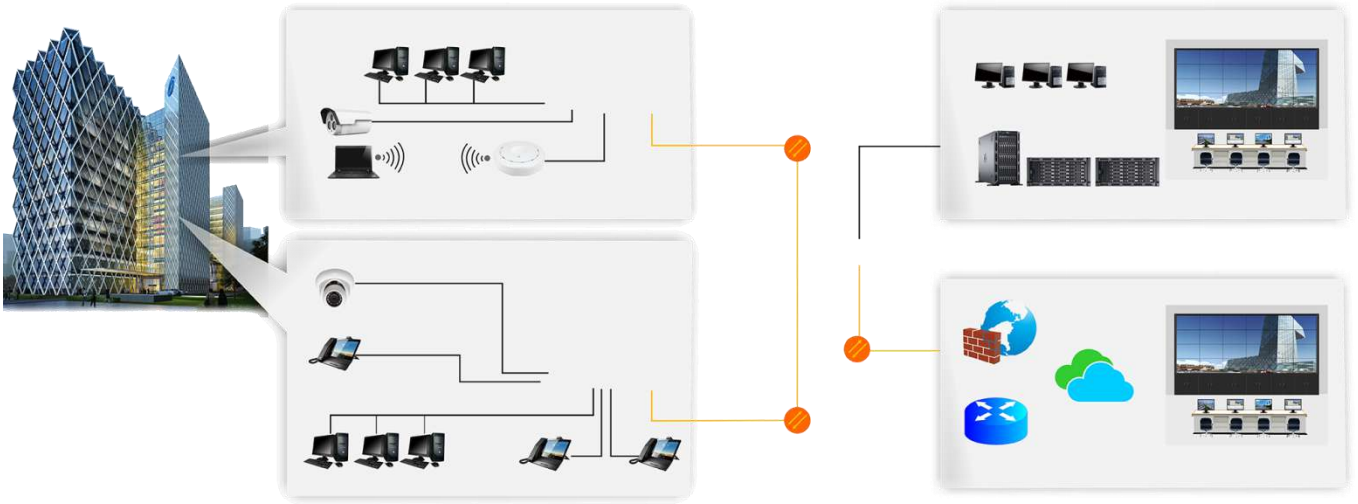
- RFC 1213 MIB-II
- RFC 1215 Generic Traps
- RFC 1493 Bridge MIB
- RFC 2674 Bridge MIB Extensions
- RFC 2737 Entity MIB (Version 2)
- RFC 2819 RMON (1, 2, 3, 9)
- RFC 2863 Interface Group MIB
- RFC 3635 Ethernet-like MIB



## Structure Diagrams



## Applications



### Ordering Information

**ITT-COR-L3-24SFP8GE**

16 ports Gigabit SFP and 8 gigabit Combo L3 Managed Industrial Fiber Switch with 4-10G SFP+ Uplink,Rack mount