

## Rack Mount E1 to Ethernet

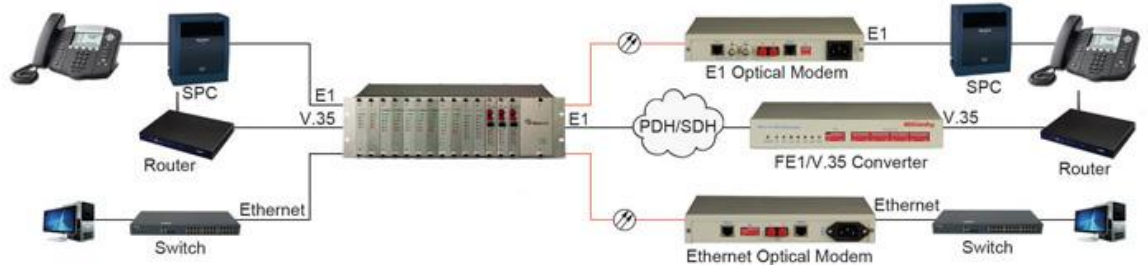
P/N : [ITT-MC3812](#)



Rack mount E1 to Ethernet Chassis can install up to 14 protocol converter modules. It is compatible with E1/V.35 module, FE1/V.35 module, E1/10(100)BaseT module, E1 optical modem module, V.35 optical modem module and Ethernet optical modem module. Introducing one power board and two electric power standby, the equipment supplies SNMP management. The chassis is widely used in star-topology ethernet interconnect. with standard 19 inch 3U height and 14pcs fully trays, adapts cards with the sorts of E1/10BaseT, FE1/10BaseT, E1 optical modem, V.35 optical modem and Ethernet optical modem. Power supply mode adopts single power panel and dual power module to backup thermal energy.

- E1/V.35 Card HM-C104 FE1/V.35 Card
- E1/10(100)BaseT Card HM-C110 V.35/Ethernet Card
- E1 modem Card HM-C114 V.35 modem Card
- Ethernet modem Card

General characteristics	
<b>Power</b>	Both power supply support redundant backup
<b>Humidity</b>	≤90% (35°C)
<b>Environment Temperature</b>	0°C-50°C
<b>Size</b>	3U height



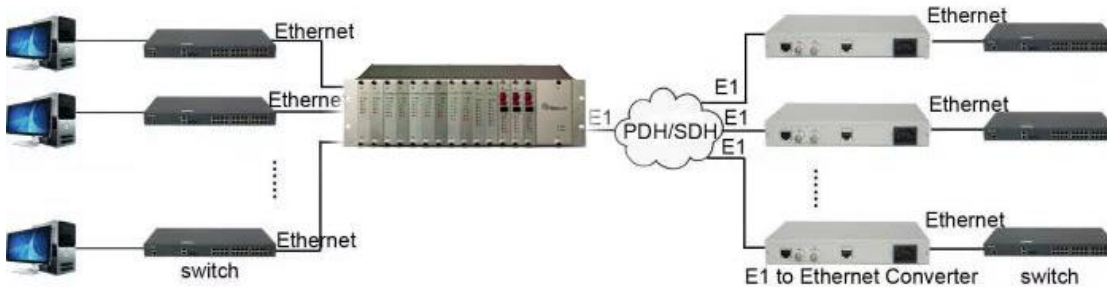
SERVICES:  
Guaranteed Warranty



# 14 slots Rack mount E1 to Ethernet Protocol Converter

## Properties

<b>E1</b>	Comply with ITU-T G.703, G.704 HDB3 coding, full alarms output by indicators Rate: 2048Kbps±50ppm Interface: 75Ω BNC / 120Ω RJ45 10/100/1000 Base-T(X) auto-adaptive RJ45
<b>Ethernet</b>	Comply with IEEE 802.3 (2000) standard Auto adapt 10/100M, MDI/MDIX, full/half duplex Interface: RJ45
<b>V.35</b>	Interface mode: DCE/DTE Interface type: DB25
<b>Environment</b>	Operating temperature: -5°C~50°C
<b>LED Indicator for</b>	Storage temperature: -40°C~70°C
<b>Environment</b>	Relative humidity: ≤95%, non-condensing
<b>Dimensions</b>	483*255*135mm (3U, 19 inches)
<b>Weight</b>	5kg with full 16 slots



SERVICES:  
Guaranteed Warranty

