

## Fiber-16Voice Multiplexer



This device provides 1-16\*E1 interface, 1-4\*10M/100M Ethernet interface (Wire Speed 100M) and 2 expansion interface. 4\* Ethernet interface is switch interface, can support VLAN. 2 expansion interface can be used as the transmission channel of RS232/RS485/RS422 asynchronous data. It is very flexible. It has alarm function. The work is reliable, stable, and low power consumption, high integration, small size.

P/N : [ITT-MU3791](#)



- Based on self -copyright IC
- Modular wide dynamic optical detector
- Provide Console manage interface (RS232)
- Provide two fiber interface 1+1 protect ( APS) function ,and ALS (Automatic Laser Shutdown/Reduction) function
- Ethernet interface rate is 10M/100M, half/full duplex Auto-Nego
- Ethernet package size support 1916 byte and 4 Ethernet port could be set separately, and ethernet bandwidth can be setting base on multiple of 32K
- E1 interface comply with G.703, adopts digital clock recovery and smooth phase-lock technology
- Uses standard 2 wire telephone (non-telephone handles) set as engineering order-wire hotline(optional)
- When optical lose signal, it can detect the remote device is power off or fiber is disconnected, and indicates alarm by LED
- The local device can view the remote device working condition
- Provide command the remote interface Loop Back, support local E1 Loop Back function, support E1 LOS and AIS alarm, ease line maintenance
- The transmission distance is up to 2-120Km without interruption
- Support SNMP manager (SNMP agent inside)
- AC 220V, DC-48V, DC24V can be optional
- DC-48V/DC24V power supply polarity detection function, Polarity-Free

SERVICES:  
Guaranteed Warranty



Website: [ittelecom.co](http://ittelecom.co)  
Skype: [ittelecomco](http://ittelecomco)  
Email: [mailto:sale@ittelecom.co](mailto:mailto:sale@ittelecom.co)

<https://ittelecom.co/shop>

## Specification

<b>Model:</b>	ITT-MU3791
<b>Functional Description</b>	16E1+4FE PDH ,19"inch 1U, Optional(hotline telephone, Console+SNMP,1+1 fiber back up)
<b>Port Description</b>	1+1 optical port, 16 E1 interfaces (75/120 ohms), 4 FE interfaces,1*RS232 Console interface,1*SNMP Ethernet interface, one engineering order-wire telephone interface
<b>Power</b>	Power supply: AC180V ~ 260V ; DC -48V ; DC +24V Power consumption: ≤10W
<b>Dimension</b>	Product Size: 19inch 485X138X45mm (WxDxH)
<b>Weight</b>	2.4KG
<b>Fiber</b>	
Optical port	1 , 2
Optical Fiber	Single/Dual fiber
Fiber interface	FC/SC/ST/LC(SFP)
Wavelength	850nm/1310nm Multimode
Relay-free transmission distance	1310nm/1550nm Single mode
Typical transmit power	20~120Km
Single mode1310/1550nm	≥-9dB
Multimode850nm	-18dBm
Multimode1310nm	-25dBm
Receive sensitivity range	-28dBm~- 40dBm
Physical Interface	RJ45 Support Auto-MDIX
<b>E1 Interface</b>	
Interface Standard:	comply with protocol G.703;
Interface Rate:	2048Kbps±50ppm;
Interface Code:	HDB3;
E1 Impedance:	75Ω (unbalance), 120Ω (balance);
Jitter tolerance:	In accord with protocol G.742 and G.823
Allowed Attenuation:	0~6dBm
<b>Ethernet interface(10/100M)</b>	
Interface rate:	10/100 Mbps, half/full duplex auto-negotiation
Interface Standard:	Compatible with IEEE 802.3, IEEE 802.1Q (VLAN)
MAC Address Capability:	4096
Connector:	RJ45, support Auto-MDIX

SERVICES:  
Guaranteed Warranty



Website: [ittelecom.co](http://ittelecom.co)

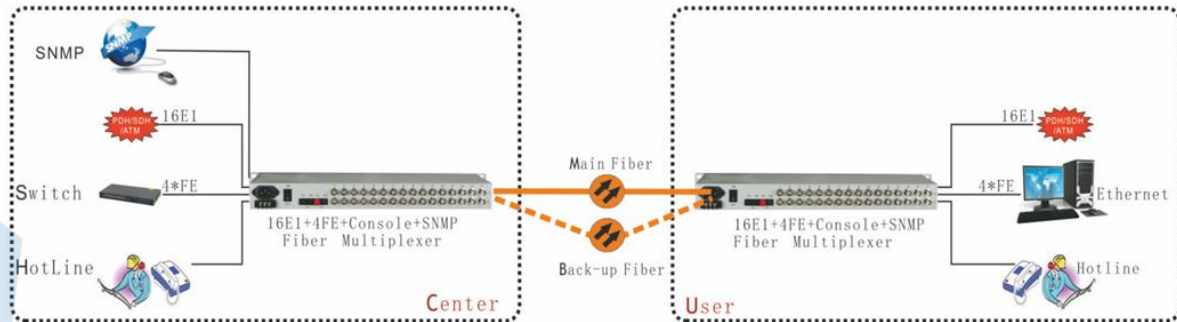
Skype: [ittelecomco](https://www.skype.com/en/contacts/ittelecomco)

Email: [mailto:sale@ittelecom.co](mailto:mailto:sale@ittelecom.co)

## Specification

### Working environment

Working temperature:	-10°C ~ 50°C
Working Humidity:	5%~95 % (no condensation)
Storage temperature:	-40°C ~ 80°C
Storage Humidity:	5%~95 % (no condensation)



SERVICES:  
Guaranteed Warranty

